

DIAMOND

Fiber Optic Components

NETWORK ACCESSORIES

DESCRIPTION

The ADT-UNI is a universal connector/adaptor solution, which provides unparalleled optical performance and proven long-term reliability. The universal adapters which allows the acceptance of E-2000™, FC, SC, DIN and ST™ connectors, are modular interchangeable adapters based on 2.5 mm diameter mating sleeve whose size, ease of cleaning and inspection make them an ideal choice for test and measurement equipment. These adapters, which are suitable for SM (PC & APC versions) and MM PC applications, must be used with the respective ADT-UNI Universal Connectors, which provide an internal connection to the equipment.

Mating sleeve

Precision split sleeve Zirconia.

FEATURES AND BENEFITS

- ▶ Rugged construction
Long service life and high repeatability of IL values
- ▶ Protruded ferrule of internal connector
Easy access for cleaning and inspection
- ▶ Excellent optical performance (SM & MM)

SPECIFICATIONS

	MULTIMODE 0° PC	SINGLE MODE 0° PC	SINGLE MODE 8° APC	UNITS	TEST CONDITIONS
Insertion Loss (IL)*	typ. 0.15	typ. 0.2	typ. 0.2	dB	IEC 61300-3-4; $\lambda = 1300/1550\text{nm}$
Repeatability of IL	max ± 0.1			dB	Over service life
Service life	1000 mate/demate cycles				
Operating temperature	-10/+60			°C	
Storage temperature	-20/+70			°C	

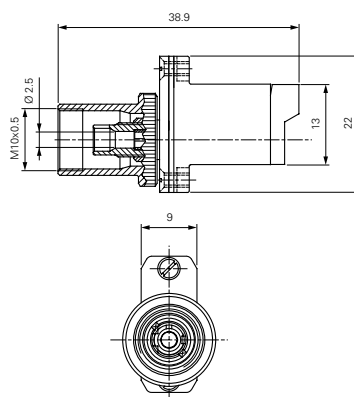
* Measured using two reference connectors

TYPES AND DIMENSIONS

ADT-UNI E-2000™

External parts: Copper-nickel alloy, LCP/PBT

Standard green plastic housing and frame.
(Other housing or frame colors available upon request).



ADT-UNI

(Universal Adapter Interface)

SINGLE MODE PC /APC
MULTIMODE PC



DIAMOND SA • Via dei Patrizi 5 • CH-6616 Losone
Tel. +41 91 785 45 45 • Fax +41 91 785 45 00 • e-mail info@diamond-fo.com

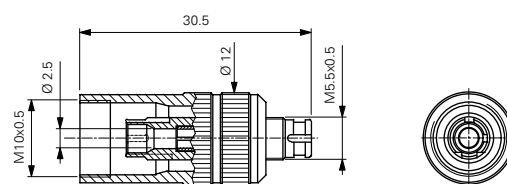
www.diamond-fo.com

Specifications subject to change
without notice

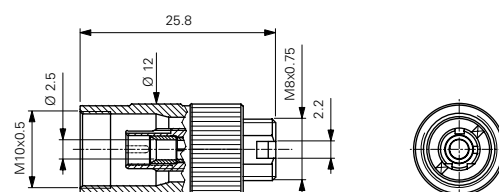
BDD 1950120 015

ADT-UNI DIN

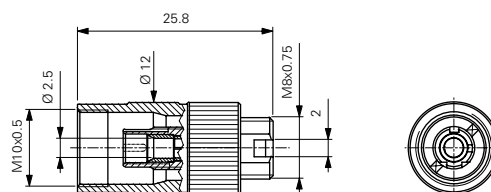
External parts: Copper-nickel alloy

**ADT-UNI FC (key 2.2 mm)**

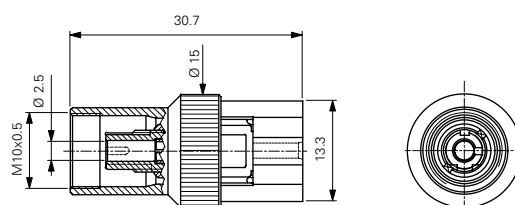
External parts: Copper-nickel alloy

**ADT-UNI FC (key 2 mm)**

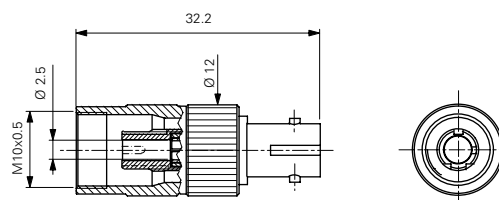
External parts: Copper-nickel alloy

**ADT-UNI SC**

External parts: Copper-nickel alloy, PEI

**ADT-UNI ST™**

External parts: Copper-nickel alloy



NOTE - For more information concerning Universal Connectors, please refer to the ADT-UNI Universal Connector Interface datasheet under the section Cable assemblies and Adapters.

ORDER INFORMATION

To order ADT-UNI, please refer to the part numbers provided in the enclosed P/N list.
Other versions upon request.