

# DIAMOND

## Fiber Optic Components

### CABLE ASSEMBLIES AND ADAPTERS

The unique, user-friendly features of the Diamond E-2000™ connector, coupled with its rapid and enthusiastic worldwide acceptance, have prompted the development of a duplex version of this product. The E-2000™ Duplex connector is a natural extension of the current product.

Through the use of a simple clip-bridge and an extended thumb-latch, it offers the same performance and stability as the Simplex version. Furthermore, it uses common components and can be terminated using existing tooling.

The E-2000™ Duplex connector is available in multimode PC and single mode PC and 8° APC versions.

The E-2000™ Duplex features the following highlights:

- ▶ Injection molded housing (UL 94 V0 flammability rating)
- ▶ Integrated protective caps, positive latching mechanism with interchangeable, color-coded thumb-latch
- ▶ Mating adapters spring-loaded shutters
- ▶ Interchangeable color-coded mating adapter frames
- ▶ Existing components can be upgraded to duplex through the use of a simple clip-bridge and an extended thumb-latch

### AVAILABLE AS

- ▶ Terminated connector
- ▶ Connector set, (to be terminated with Diamond special equipment)

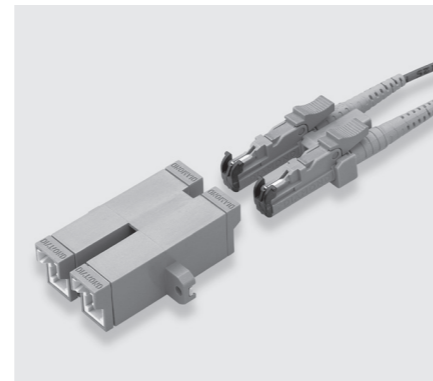
### SPECIFICATIONS

	MULTIMODE 0° PC	SINGLE MODE 0° PC	SINGLE MODE 8° APC	SINGLE MODE 8° 0.1 dB	UNITS	TEST CONDITIONS
Insertion Loss (IL)	typ. 0.15 max 0.4	typ. 0.2 max 0.4	typ. 0.2 max 0.4	max 0.1	dB	IEC 61300-3-4; λ = 1300/1550nm
Return Loss (RL)	typ. 40	min 50	min 70*	min 85*	dB	IEC 61300-3-6; λ = 1300/1550nm
Repeatability of IL	max ±0.1			-	dB	IEC 61300-2-2; λ = 1300/1550nm
Service life	1000 mate/demate cycles			-	-	According to field experience
Operating temperature	-40/+85**			-	°C	
Storage temperature	-40/+90**			-	°C	

\* Measured with high precision reflectometer  
 \*\* May be further limited by cable specifications

## E-2000™ Duplex

SINGLE MODE PC/APC  
 MULTIMODE PC



DIAMOND SA • Via dei Patrizi 5 • CH-6616 Losone • Switzerland  
 Tel. +41 91 785 45 45 • Fax +41 91 785 45 00 • e-mail info@diamond-fo.com

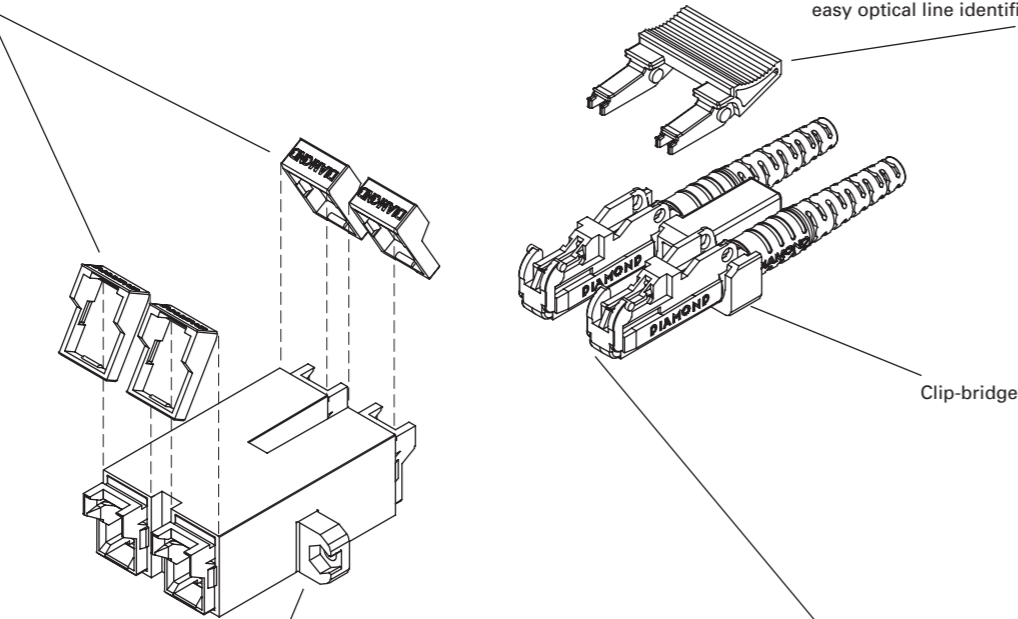
[www.diamond-fo.com](http://www.diamond-fo.com)

Specifications subject to change  
 without notice

BDD 1950072 02\_12

Interchangeable color-coded frames (8 different colors)  
 ▶ Permits clear identification of lines on crowded panels

Positive latching mechanism with interchangeable, color-coded thumb-latch  
 ▶ Offers superior retention under axial load  
 ▶ Allows higher packing densities  
 ▶ Distinct color-coded thumb latch allows easy optical line identification and ordering



Spring-loaded metal protection shutters  
 ▶ Engages automatically to protect personnel from eye-damaging laser radiation  
 ▶ Angled, anti-reflection surface ensures low reflectance in unmated state, inducing light diffusion

Integrated metal protective caps  
 ▶ Automatically protects personnel from eye-damaging laser radiation  
 ▶ Closes automatically upon extraction to protect ferrule from dust and scratches  
 ▶ Suitable for high power applications

Clip-bridge

### COLOR KEYING

The E-2000™ system permits the user to specify the color of the thumb-latch and the mating adapter frame so that different line types, uses, destinations and points of origin, etc. can be readily identified.

The thumb-latch and frame are available in eight distinct colors:

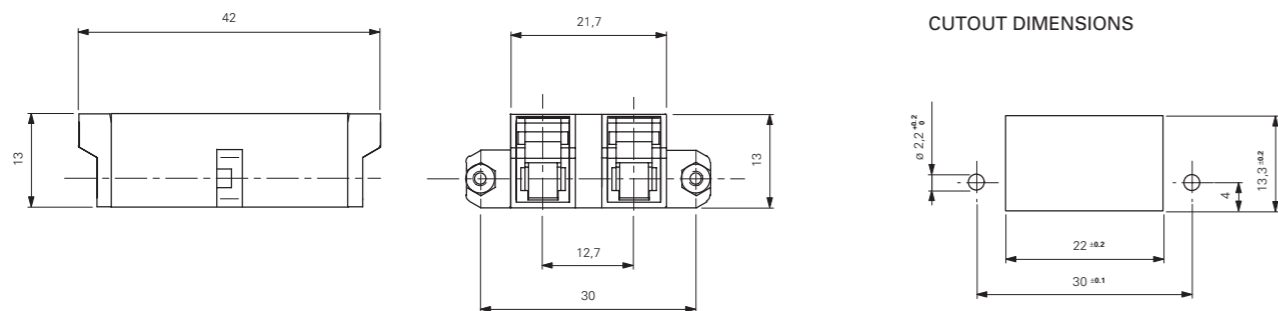
- |                  |           |
|------------------|-----------|
| 1. Blue          | 5. Orange |
| 2. Beige (White) | 6. Yellow |
| 3. Black         | 7. Green  |
| 4. Red           | 8. Violet |

**NOTE** As standard, Diamond uses colored connector bodies, cable boots and mating adapter housings to identify the fiber type (SM or MM 50/62.5µm) and ferrule polish (PC or APC).

Diamond's standard **connector/boot/adapter** colors are as follows: beige/black/beige for MM PC 50µm, beige/beige/beige for MM PC 62.5µm, blue/blue/blue for SM PC, and green/green/green for SM APC. Other colors are available upon request. Please refer to the Simplex, Duplex, Multiple fiber Assemblies order form for standard duplex channel identification.

### ADAPTER TYPE AND DIMENSIONS

E-2000™ Duplex mating adapter

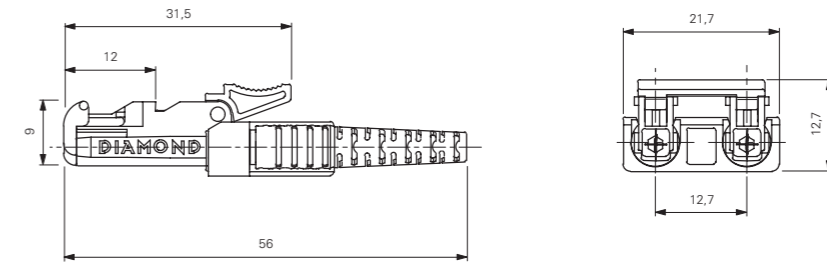


### CONNECTOR TYPES AND DIMENSIONS

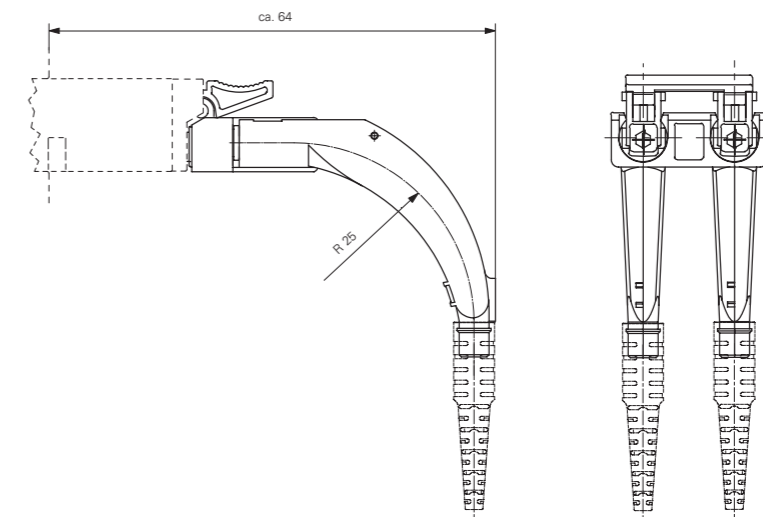
E-2000™ Duplex connectors 900 µm - 3 mm boot style

Available types: **E-2000™ Duplex PC**  
**E-2000™ Duplex APC**  
**E-2000™ Duplex APC 0.1 dB**

Ferrule material: Zirconia/metal insert  
 External parts: Plastic



E-2000™ Duplex connectors 900 µm - 3 mm 90° boot style



### ORDER INFORMATION

When ordering standard patchcords and mating adapters, please refer to the part numbers provided in the enclosed P/N list.

When ordering pigtailed or cable assemblies, please refer to the **connector type description** in the Available types section, and fill in the Simplex, Duplex, Multiple fiber Assemblies order form according to **those** denominations.