

# DIAMOND *flexos*

## Fiber Optic Passive Components

### PATCH PANELS AND DISTRIBUTORS

DIAMOND *flexPatch fix* 1U is a high-density fiber interconnect unit that support up to 24 duplex ports (48 fibers) in a 19" 1U rack-mountable footprint. The removable top panel provides accessibility for field termination, fiber management, or troubleshooting activities. Cable entry knockouts are provided on both the sides and the rear of the unit providing flexibility for cable routing as well strain relief. The unit is available with a variety of fiber storage and management options designed to maintain minimum fiber bend for optimum optical performance and long-term reliability. Labelling models are available for download from our website.

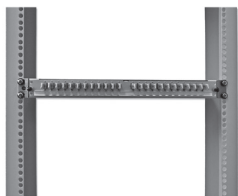
### FEATURES AND BENEFITS

#### *flexPatch fix*

- ▶ Simplest handling of the frontpanel thanks to magnets for fixing
- ▶ Up to 48 fibers on one height unit (1U)
- ▶ Available in E-2000™, SC, F-3000™, FC, and ST™ connector styles
- ▶ Available with factory terminated assemblies
- ▶ Knock out cable access points on both sides and rear of unit
- ▶ Compatible with the Diamond's Field Fusion
- ▶ Multiple strain relief options
- ▶ Variable deep-adjustably up to 60mm
- ▶ Removable top cover for optimal access

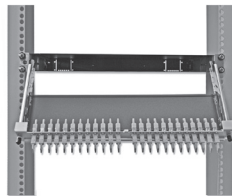
#### *flexPatch fix telescoping*

- ▶ Provides all features and benefits like *flexPatch fix*
- ▶ Telescopic front panel which can be angled up to 60° to allow an optimal accessibility even by having a high-density in the Rack



#### *flexPatch fix*

For cleaning and splicing accessible by opening the cover.



#### *flexPatch fix telescopic*

Although high density easy accessible due to the bendable front panel.

### SPECIFICATIONS

- ▶ Material: Powder-coated case, anthracite-colored to easily detect fiber remains.  
Front plate made of silver-colored, anodized aluminium
- ▶ Dimensions: 482.6 (19") x 44.45 (1U) x 240 mm (W x H x D),  
19 x 1.75 x 9.5 inches
- ▶ Weight: 

	<i>flexPatch fix</i> :	<i>flexPatch fix telescopic</i> :
24x E-2000™ Compact	2157 gram	2473 gram
24x E-2000™ Simplex	2041 gram	2340 gram
12x E-2000™ Compact 45°	1994 gram	2295 gram

### *flexPatch fix* 1U



Removable Cover



DIAMOND SA • Via dei Patrizi 5 • CH-6616 Losone • Switzerland  
Tel. +41 91 785 45 45 • Fax +41 91 785 45 00 • e-mail [info@diamond-fo.com](mailto:info@diamond-fo.com)

[www.diamond-fo.com](http://www.diamond-fo.com)

Specifications subject to change  
without notice

BDD 1900453\_02\_13

## ORDER INFORMATION

PRODUCT NAME	DESCRIPTION	CONFIGURATION
19" flexPatch fix 1U 24xE-2000™ Compact RJ (48 fibers)	Assembled with: 24x mating adapters E-2000™ Compact RJ, MM50 μm E-2000™ Compact RJ, MM50 μm OM3 E-2000™ Compact RJ, MM62.5 μm E-2000™ Compact RJ, SM9 μm 0° E-2000™ Compact RJ, SM9 μm 8°	flexPatch fix flexPatch fix telescopic
19" flexPatch fix 1U 24xE-2000™ Simplex (24 fibers)	Assembled with: 24x mating adapters E-2000™ Simplex, MM50 μm E-2000™ Simplex, MM50 μm OM3 E-2000™ Simplex, MM62.5 μm E-2000™ Simplex, SM9 μm 0° E-2000™ Simplex, SM9 μm 8°	flexPatch fix flexPatch fix telescopic
19" flexPatch fix 1U 12xE-2000™ Compact RJ 45° (24 fibers)	Assembled with: 12x mating adapters E-2000™ Compact RJ, MM50 μm E-2000™ Compact RJ, MM50 μm OM3 E-2000™ Compact RJ, MM62.5 μm E-2000™ Compact RJ, SM9 μm 0° E-2000™ Compact RJ, SM9 μm 8°	flexPatch fix flexPatch fix telescopic flexPatch fix 45° right flexPatch fix 45° left
19" flexPatch fix 1U 24xF-3000™ Simplex (24 fibers)	Assembled with: 24x mating adapters F-3000™ Simplex, MM50 μm F-3000™ Simplex, MM50 μm OM3 F-3000™ Simplex, MM62.5 μm F-3000™ Simplex, SM9 μm 0° F-3000™ Simplex, SM9 μm 8°	flexPatch fix flexPatch fix telescopic
19" flexPatch fix 1U 24xF-3000™ Duplex (48 fibers)	Assembled with: 24x mating adapters F-3000™ Duplex, MM50 μm F-3000™ Duplex, MM50 μm OM3 F-3000™ Duplex, MM62.5 μm F-3000™ Duplex, SM9 μm 0° F-3000™ Duplex, SM9 μm 8°	flexPatch fix flexPatch fix telescopic
19" flexPatch fix 1U 12xSC Duplex (24 fibers)	Assembled with: 12x mating adapters SC Duplex, MM50 μm SC Duplex, MM50 μm OM3 SC Duplex, MM62.5 μm SC Duplex, SM9 μm 0° SC Duplex, SM9 μm 8°	flexPatch fix flexPatch fix telescopic
19" flexPatch fix 1U 24xSC Duplex (48 fibers)	Assembled with: 24x mating adapters SC Duplex, MM50 μm SC Duplex, MM50 μm OM3 SC Duplex, MM62.5 μm SC Duplex, SM9 μm 0° SC Duplex, SM9 μm 8°	flexPatch fix flexPatch fix telescopic
19" flexPatch fix 1U 24xST (24 fibers)	Assembled with: 24x mating adapters ST™, MM50 μm ST™, MM50 μm OM3 ST™, MM62.5 μm ST™, SM9 μm 0° ST™, SM9 μm 8°	flexPatch fix flexPatch fix telescopic
19" flexPatch fix 1HE 24xFC (24 fibers)	Assembled with: 24x mating adapters FC/PC, MM50 μm FC/PC, MM50 μm OM3 FC/PC, MM62.5 μm FC/PC, SM9 μm 0° FC/APC, SM9 μm 8°	flexPatch fix flexPatch fix telescopic

Customer specific configurations available, please contact your local DIAMOND representative.