

DIAMOND *flexos*

Fiber Optic Active Components

SWITCHES

The DIAMOND flexos Mini Switch is compact, high performance, Fiber to the Office/Workstation solution which allows a quick and easy "snap-in" installation and is compatible with most brands of surface raceway and sub floor systems.

FEATURES AND BENEFITS

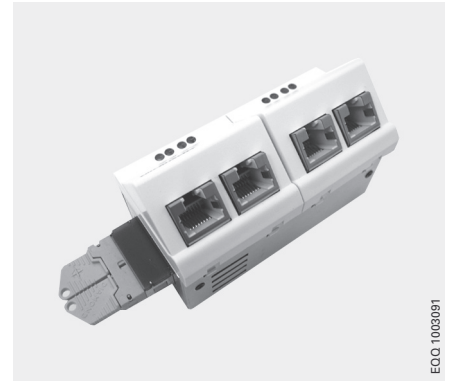
- ▶ Fast Ethernet 4 Port Installation Switch in a 1x4 FX/TX port configurations with 10/100BaseTX, 10/100/1000BaseT auto negotiation
- ▶ E-2000™ LAN Low Profile fiber optic interface
- ▶ Store-and-forward switching, up to 4k MAC addresses, 1Mbit RAM buffer
- ▶ Selectable Full/half duplex frame according IEEE802.3x
- ▶ UTP/STP MDI/MDI-X Auto crossing
- ▶ Status/diagnostic LED's
- ▶ Power supplies: 230V (internal), PoE 48V (external)
- ▶ Optional VLAN capabilities (Layers 1, 2, and 3)
- ▶ Optional with network management
- ▶ Management per SNMP Telnet, Web based
- ▶ Fanless

SPECIFICATIONS

Compatibility:	IEEE802.3 10/100BaseTX and 100BaseFX
Type:	Fast Ethernet Installation Switch 4 port 10/100 BaseTX + 1 port 100BaseFX
Interfaces:	Optical: 1xE-2000™ LAN Low Profile Electrical: 4xRJ45
Cable type:	UTP/STP 100ohm, Cat.5
Fiber type:	Multimode fiber 50 or 62.5/125 μm
Date rate:	TX: 10/100 Mbit/s resp. 10/100/1000/ Mbit/s FX: 100 Mbit/s, SX: 1000 Mbit/s (Full-duplex)
Wavelength:	100FX 1300 nm / 1000SX 850 nm
Optical Power:	- 19 dBm
Sensitivity:	- 30 dBm
Max. distance:	100 m (UTP/STP) Full-duplex 100Mbit/s 2km, 1000Mbit/s 550m (MM) Full-duplex 100Mbit/s 15km, 1000Mbit/s 10km (SM)
Dimensions:	90 x 57 x 45 mm (LxWxD), inst. depth 33 mm
Mounting:	Surface raceway or sub floor
Operating temperature:	0°C to 50°C
Storage temperature:	-20°C to 85°C
Rel. humidity:	5% to 80% (non condensing)
Power supply:	230V AC internal power supply 48V DC external power supply
LED display:	On Power FD On Full-duplex operation Flashing Collision (Half-duplex operation) L5 On Fiber link Flashing Data activity (FX) L1- On UTP/STP link L4 Flashing Data activity (TX)

Mini Switch

10/100 MM/SM
10/100/1000 MM



EQO_1003091



EQO_1045332



DIAMOND SA • Via dei Patrizi 5 • CH-6616 Losone • Switzerland
Tel. +41 91 785 45 45 • Fax +41 91 785 45 00 • e-mail info@diamond-fo.com

www.diamond-fo.com

Specifications subject to change
without notice

BDD 1900436 03_12

MANAGEMENT FEATURES

- ▶ Integrated agent for web based SNMP management
- ▶ System monitoring and configuration via SNMP
- ▶ Configuration per Port with PC based management tool (IntServ, Layer 1)
- ▶ VLAN configuration (Layer 1 port, Layer 2 VLAN tag, and Layer 3 Diff Serv prioritization)
- ▶ Data prioritization (Class of Service)
- ▶ Prioritization by Tag setting (VLAN according IEE802.1q, Layer 2)
- ▶ Differentiated Service, IP Tos-field (DiffServ, Layer 3)

POWER OVER ETHERNET FEATURES (PoE)

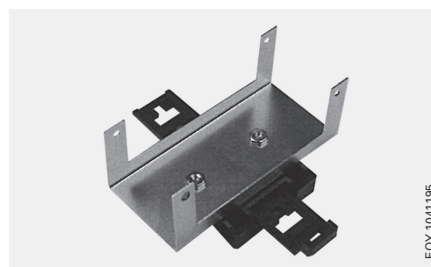
- ▶ Fast Ethernet Installations-Switch with integrated Management
- ▶ Power over Ethernet according to IEEE 802.3af support on all copper ports, integrated PoE Controller
- ▶ Extensive configuration options with PC based management tool
- ▶ 48V DC compact external power supply, or a separate in-house DC power network
- ▶ Data prioritisation (Class of Service) according to IEEE 802.1q
- ▶ All VLAN-Functionality according to IEEE 802.1

ORDER INFORMATION

PRODUCT NAME	DESCRIPTION	ORDER NUMBER
Mini Switch 10/100 MM	E-2000™ Mini Switch 10/100 auto negotiation 4 port STP 10/100BaseTX with FO link MM 100BaseFX, with SNMP, incl. power supply	EQQ 1022098
Mini Switch 10/100 SM	E-2000™ Mini Switch 10/100 auto negotiation 4 port STP 10/100BaseTX with FO link SM 100BaseFX, with SNMP, incl. power supply	EQQ 1032973
Mini Switch 10/100 MM PoE	E-2000™ Mini Switch 10/100 auto negotiation 4 Port STP 10/100BaseTX with FO-link 100BaseFX, with SNMP, excl. sep. power supply, incl. PoE-Controller	EQQ 1028453
Mini Switch 10/100/1000 MM PoE	E-2000™ Mini Switch 10/100/1000 auto neg. 4 Port STP 10/100/1000BaseT with FO-link 1000 BaseSX, with SNMP, excl. sep. power supply, incl. PoE-Controller	EQQ 1045332
Power Supply Module for PoE Switches	AC-DC Power supply Module for Fast- and Gigabit Ethernet 45x45 Switches,	EQQ 1028455
DIN-Rail Power Supply Module for PoE Switches	AC-DC DIN-Rail Power Supply Module for Fast- and Gigabit Ethernet Switches, 48VDC/1,35A 65W for 45x45 PoE Switch	EQQ 1041176
DIN-Rail Adaptor for 45x45 Switches	DIN-Rail Adaptor for 45x45 Switches	EQY 1041195
Surface raceway mounting box (Ackermann)	Mounting box with cover compatible with Ackermann surface raceway, (80 mm cover)	EQY 1003105
AP Mosaic Box 6-per 5 incl. blind cover	Mounting box with cover for Mini Switch, for surface mount installation includes blind cover (Legrand preferred)	EQY 1027990



EQQ 1022098



EQY 1041195



EQY 1041176



EQY 1003105

Also available with other common optical interfaces or in singlemode configurations, please contact your local DIAMOND representative