

DIAMOND

Fiber Optic Components

CABLE ASSEMBLIES AND ADAPTERS

SPECIFICATIONS

	MULTIMODE 0° PC	SINGLE MODE 0° PC	SINGLE MODE 8° APC	UNITS	TEST CONDITIONS
Insertion Loss (IL)	typ. 0.15 max. 0.4	typ. 0.2 max. 0.4	typ. 0.2 max. 0.4	dB	IEC 61300-3-4; $\lambda = 1300/1550\text{nm}$
Return Loss (RL)	min. 40	50	min. 70*	dB	IEC 61300-3-6; $\lambda = 1300/1550\text{nm}$
Repeatability of IL	max ± 0.1			dB	IEC 61300-2-2; $\lambda = 1300/1550\text{nm}$
Service life	1000 mate/demate cycle			-	According to field experience
Operating temperature	-40/+85**			°C	
Storage temperature	-40/+90**			°C	

* Measured with high precision reflectometer

** May be further limited by cable specifications

APPLICATIONS

- ▶ Telecommunications, CATV, LAN, MAN, WAN, Test & Measurement, Industry, Medical

STANDARDS

- ▶ IEC 61 754-13 "Fiber optic interfaces - Type FC-PC connector family"
- ▶ CECC 86 115-801 "Detail specification-connector set of assessed quality for optical fibers and cables - Style FC"

DESIGN/MATERIALS

- ▶ Ferrule: $\varnothing 2.5$ mm, spring loaded (15 N), antirotation keyed
- ▶ Adaptor: Floating zirconia sleeve in Ni-plated brass housing

AVAILABLE AS

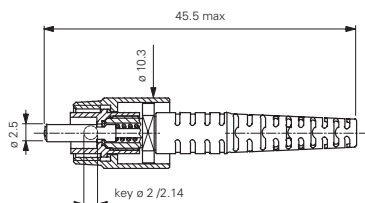
- ▶ Terminated connector
- ▶ Connector set, (to be terminated with Diamond special equipment)

CONNECTOR TYPES AND DIMENSIONS

FC Standard connectors 900 μm - 3 mm boot style

Available types: **FC Standard PC (Key $\varnothing 2.14$ mm)**
FC Standard APC (Key $\varnothing 2$ mm)
FC Standard APC (Key $\varnothing 2.14$ mm)

Ferrule material: Zirconia/metal insert
 External parts: Ni-plated brass



DIAMOND SA • Via dei Patrizi 5 • CH-6616 Losone - Switzerland
 Tel. +41 91 785 45 45 • Fax +41 91 785 45 00 • e-mail info@diamond-fo.com

www.diamond-fo.com

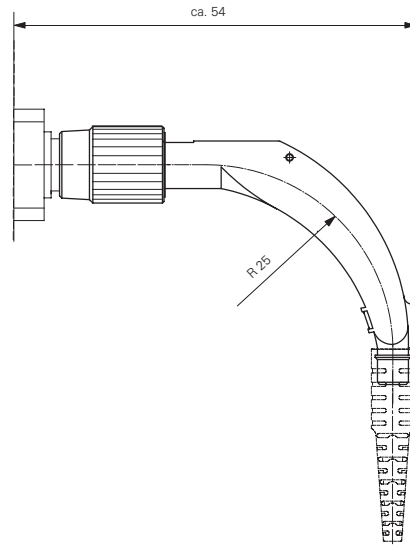
FC Standard

SINGLE MODE PC/APC
 MULTIMODE PC



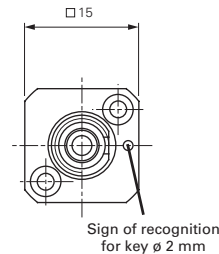
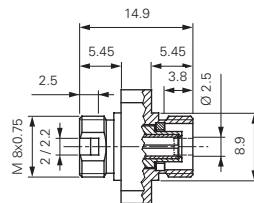
Specifications subject to change
 without notice

BDD 1950067 048

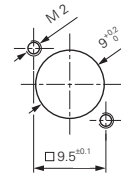
FC Standard connectors 900 μm - 3 mm 90° boot style

ADAPTER TYPES AND DIMENSIONS

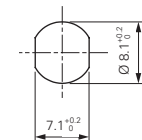
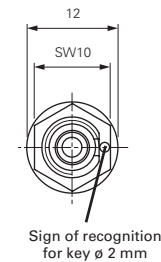
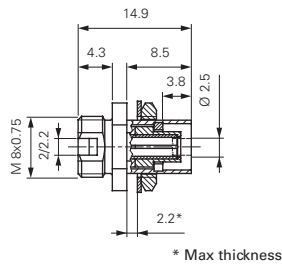
FC mating adapter square flange



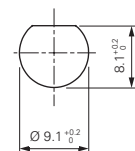
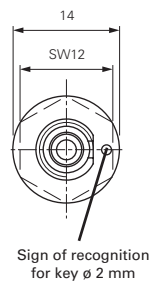
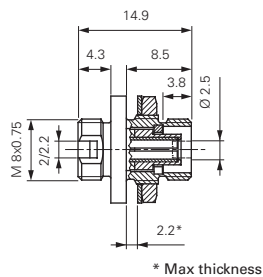
CUTOUT DIMENSIONS



FC mating adapter hexagonal flange



FC mating adapter round flange



NOTE Diamond's standard **boot** colors are as follows: Black for MM PC 50 μm , Beige for MM PC 62.5 μm , Blue for SM PC, and Green for SM APC. Other colors are available upon request.

ORDER INFORMATION

When ordering **standard** pigtails and patchcords and mating adapters, please refer to the part numbers provided in the enclosed P/N list.

When ordering pigtails or cable assemblies, please refer to the **connector type description** in the Available types section, and fill in the Simplex, Duplex, Multiple fiber Assemblies order form according to **those** denominations.

Other versions available upon request