

DIAMOND

Fiber Optic Components

CABLE ASSEMBLIES AND ADAPTERS

The DIAMOND Crimp&Cleave System is designed for field termination of 200/230 μm HCS-Fiber.

Typical uses include point to point installations over short distance requiring low data rate transmission, industrial applications such as machine controls or sensors.

AVAILABLE AS

- Connector set, (to be terminated with Diamond special equipment)

SPECIFICATIONS

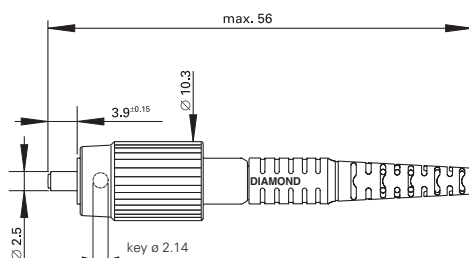
Insertion Loss	0.8 dB typ.
Service life	1000 mate/demate cycles
Operating temperature	-40/+85° C*
Storage temperature	-40/+90° C*

* May be further limited by cable specifications

CONNECTOR TYPE AND DIMENSIONS

FC Crimp&Cleave connectors 900 μm - 3 mm boot style

Available types: **FC Crimp&Cleave**
Ferrule material: Zirconia/copper-nickel alloy insert
External parts: Ni-plated brass / Plastic

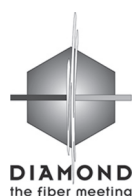


ADAPTER TYPE AND DIMENSIONS

Available types: **FC Crimp&Cleave mating adapter**
Material: Ni-plated brass
Mating sleeve: Zirconia

FC Crimp&Cleave

MULTIMODE HCS



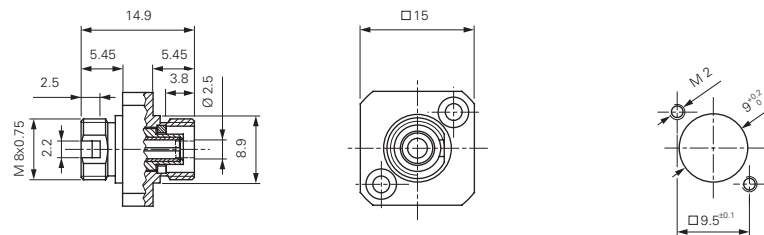
DIAMOND SA • Via dei Patrizi 5 • CH-6616 Losone
Tel. +41 91 785 45 45 • Fax +41 91 785 45 00 • e-mail info@diamond-fo.com

www.diamond-fo.com

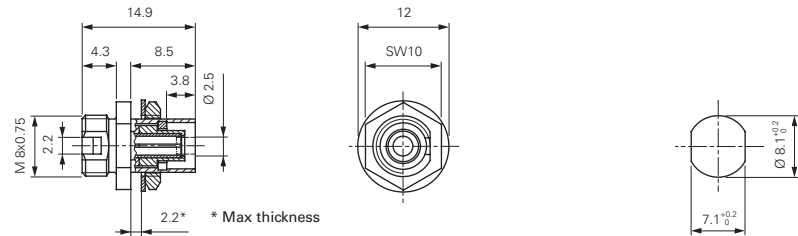
Specifications subject to change
without notice

BDD 1950035 017

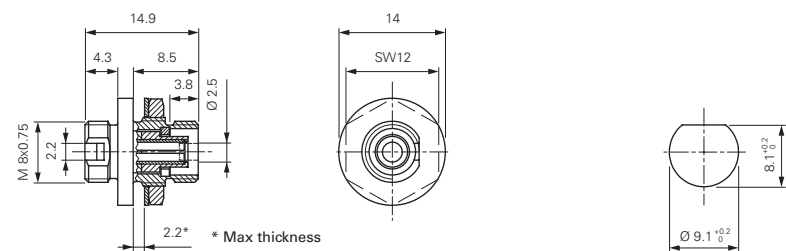
FC C&C mating adapter square flange



FC C&C mating adapter hexagonal flange



FC C&C mating adapter round flange



ORDER INFORMATION

To order connector sets and mating adapters, please refer to the part numbers provided in the enclosed P/N list.

TERMINATION KIT

The DIAMOND Crimp&Cleave kit includes all tooling, materials, and instructions to allow the installer to quickly and easily install connectors.

ORDER INFORMATION

Please refer to the Crimp&Cleave Termination Kit P/N list.

BASIC KIT CONTENTS

- 1 Crimp tool
- 2 Scissors
- 3 Fiber cleaver
- 4 Cable stripper
- 5 Fiber stripper
- 6 E-2000™ pliers

OTHER PLIERS* FOR HOUSING ASSEMBLY

- SC pliers
- FC pliers
- ST™ pliers

* Separately order



Dimensions: ca. 455 x 368 x 165 mm
Weight: ca. 5 Kg (11 lbs)