

## Replace Electrodes

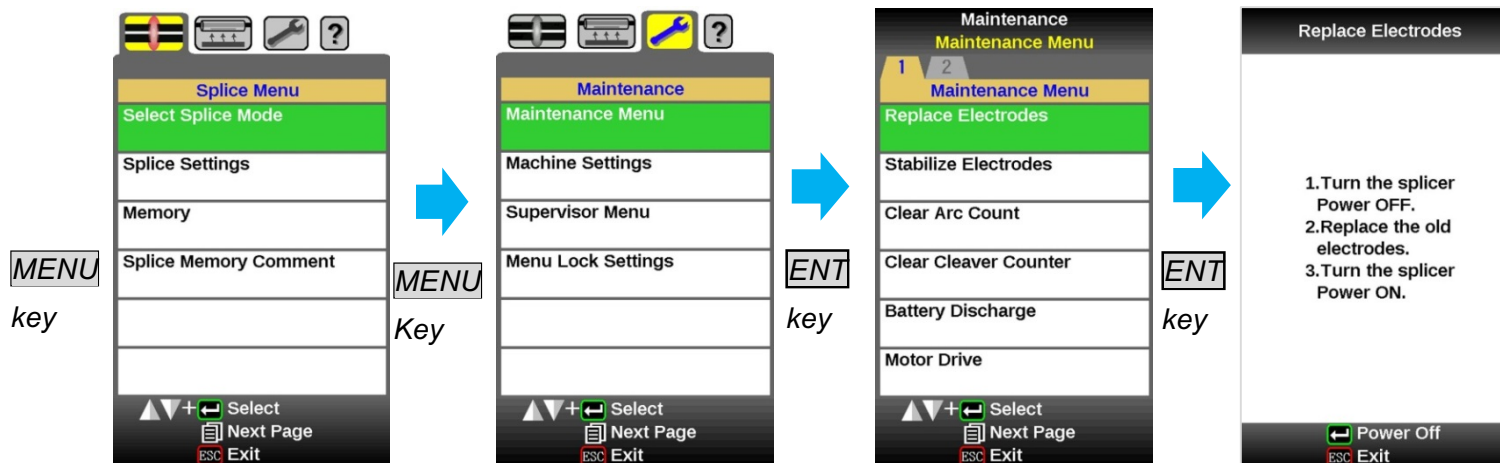
When the number of arc discharges reaches a count of setting value a message prompting to replace the electrodes is displayed immediately after turning on the power. Using the worn electrodes will result in greater splice loss and reduced splice strength. Use attached screw driver (SD-01).

### Specifications of Electrode Life

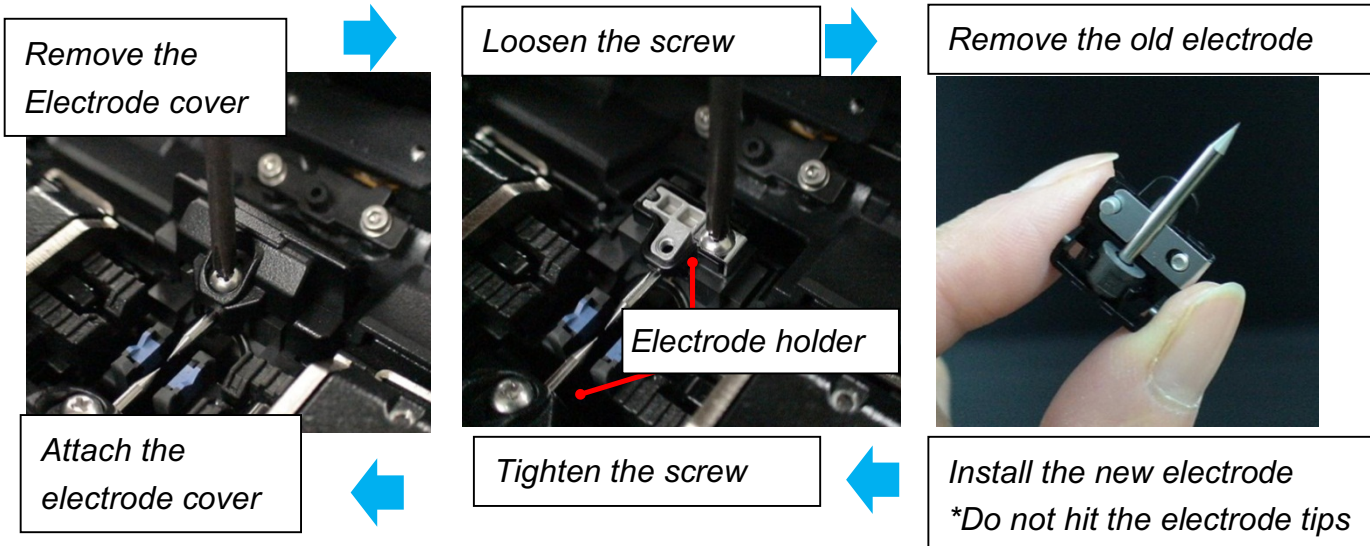
Splicer Model	Electrode model No.	Specifications of Electrode Life
70S, 80S, 61S, 62S,	ELCT2-20A	5,000 splices
21S,22S,12S	ELCT2-12	5,000 splices
70R	ELCT2-20A	1,500 splices
19R	ELCT2-20A	2,000 splices
12R	ELCT2-12	1,500 splices

### Procedure

1 Select "Replace Electrodes" on Maintenance Menu (following images are 70S's)



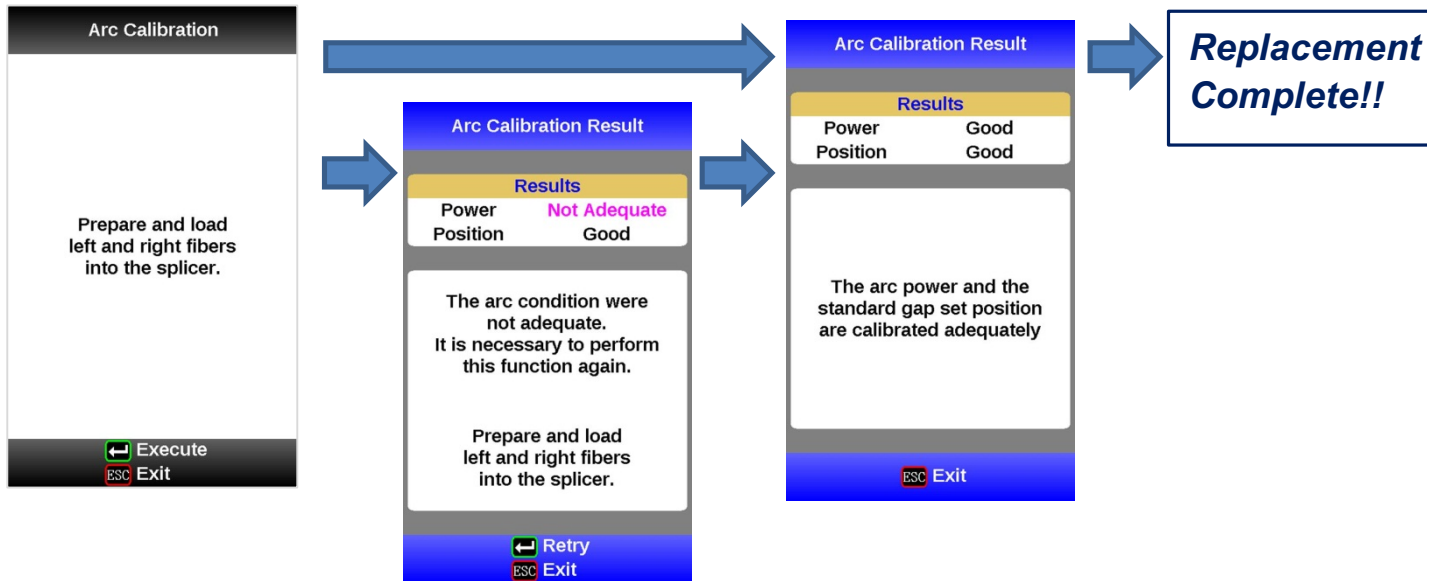
2 Turn the splicer Power OFF.



### 3. Stabilize Electrodes

Turn on the power, prepare fibers into the splicer and press **ENT** key.

### 4. Arc calibration



70S Tip of Electrodes photo 10,000 times splicing			ELCT2-20A		
+					
-					
Splicing count	0	2500	<b>5000</b>	7500	10000
	Discharge stable 		Discharge unstable 		