

LZM-110M / 110P

LAZERMaster™

Tremendous Capability for Production:

- Splices and glass processing of fibers with 80 um up to 2.3 mm diameter
- High resolution motion for precise control during splicing and glass processing operations
- Extensive library of applications which are transferable between the LZM and FSM family
- FPS PC GUI provides additional measurement capabilities & glass shaping control

CO₂ Laser Heat Source for Splicing & Glass Shaping:

- Very clean heat source: Absolutely no deposits on fiber surface as might occur with filaments or electrodes. Provides extremely stable & repeatable operation with virtually no maintenance
- Substantially reduces maintenance & calibration requirements
- Proprietary feedback system ensures heating power stability
- No need for external process gas (as required with filament systems) or Vacuum systems
- Class 1 Laser with redundant automated laser safety features

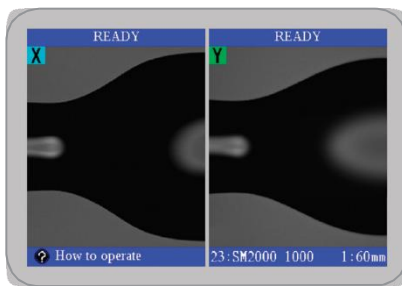
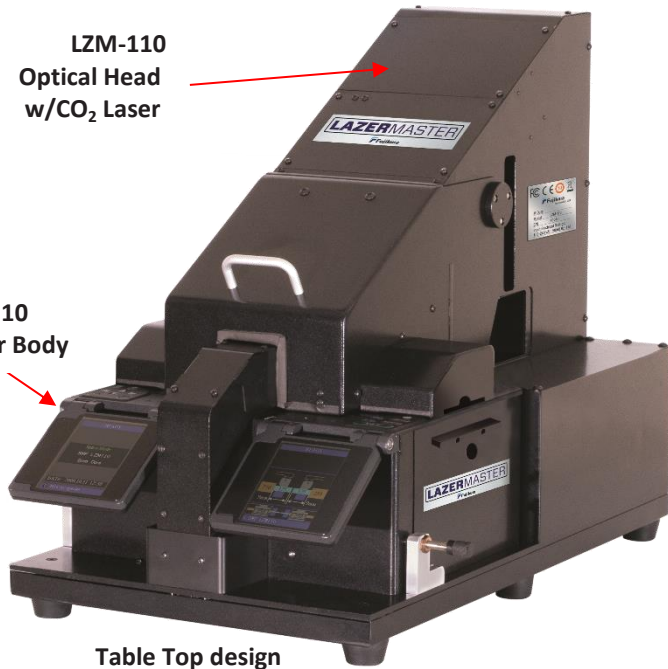


LZM-110M /110P

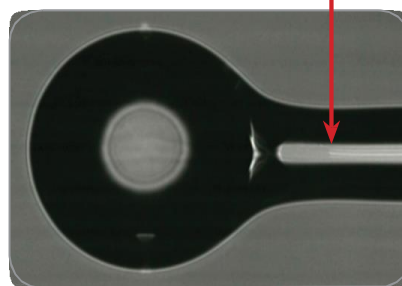
LAZERMaster™

The LZM-110M /110P LAZERMaster is a splicing and glass processing system that uses a CO₂ laser heat source to perform splicing, tapering (to create MFAs), lensing, or other glass shaping operations with glass diameters of 2.3 mm. The high resolution optical analysis system works in conjunction with on-board firmware for fully automatic splicing, tapering and other glass shaping processes.

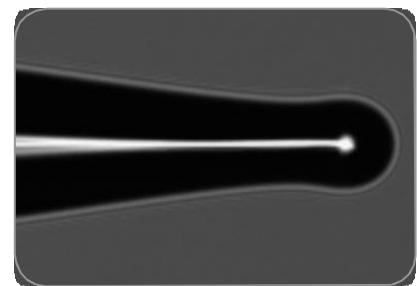
High precision glass processing is enabled by the intuitive and user-friendly on-board firmware (virtually identical to that of the Fujikura FSM-100 splicers). Operations may also be performed manually and by PC control. The FPS PC control GUI is supplied with the LZM-110M /110P to provide additional features, greater flexibility and finer control. The FSP GUI may be used on a PC chosen by the customer. Customers can also create proprietary PC control algorithms using a complete set of PC control commands.



1 mm to 2 mm X-LDF Splice



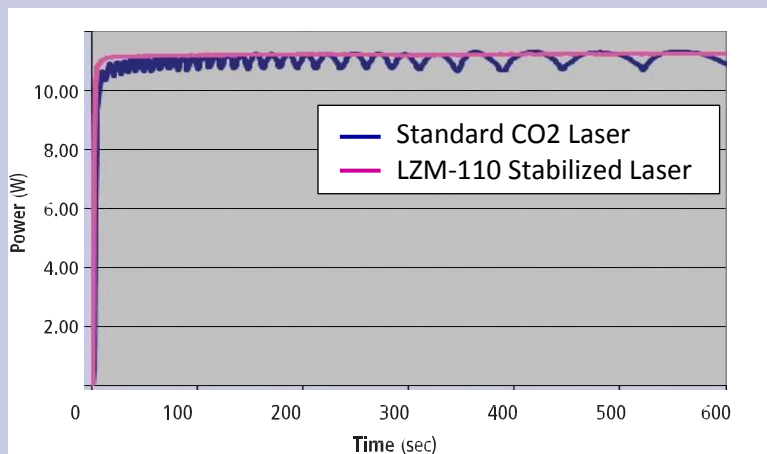
Coreless Ball Lens to Collimate SMF Fiber Output



Tapered Probe with Small Ball End

Clean & Stable Heating by CO₂ Laser

The LZM-110 LAZERMaster uses a CO₂ laser heat source to heat fibers, ensuring repeatable performance and low maintenance, and eliminating electrode or filament maintenance and instability. CO₂ laser heating also eliminates any deposits on the fiber surface that might occur from use of a filament or electrodes. The very clean and deposit-free fiber surface ensures reliable operation of very high power fiber lasers or power delivery systems.



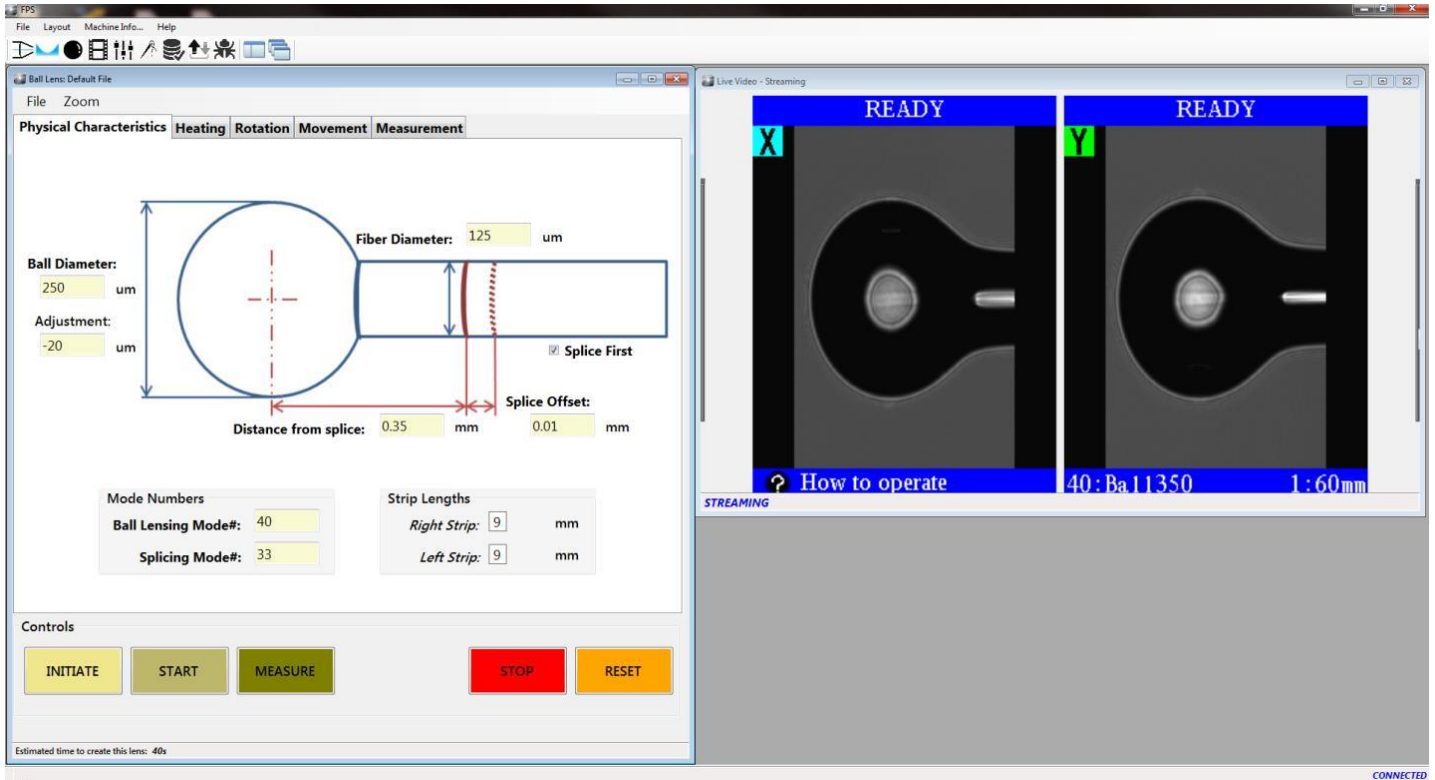
Laser Power Stability

Typical CO₂ lasers have an output power fluctuation of +/- 5%. This produces inconsistent splicing results and may cause irregularity and ripple in a taper profile.

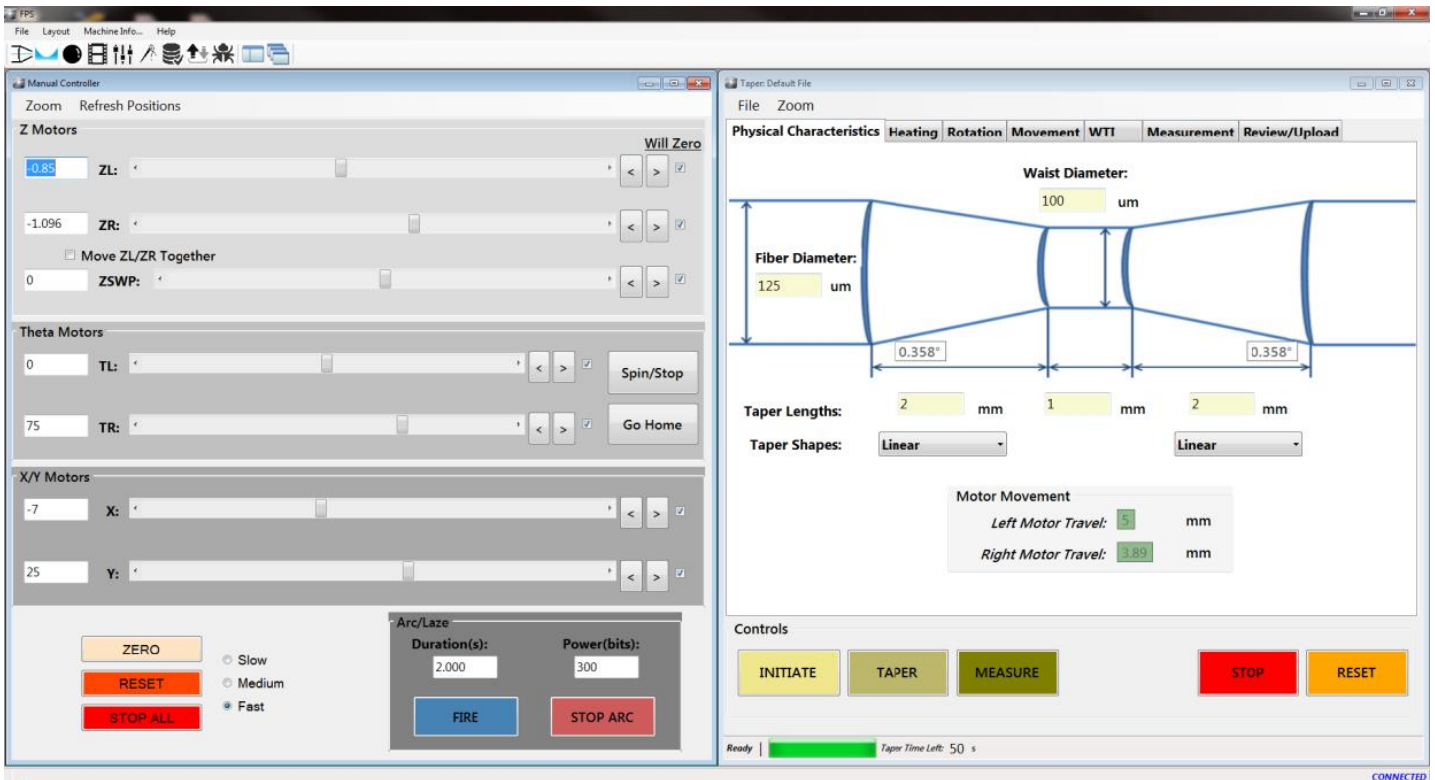
The LZM-110 utilizes proprietary (patent pending) closed-loop power stabilization techniques, resulting in power stability within 0.5%, as shown to left. This enables highly repeatable processes and very smooth taper profiles.

User-Friendly Graphical User Interface

Advanced Ball Lens Capability



Advanced Taper Capacity



ORDERING INFORMATION

| DESCRIPTION | ITEM NO. |
|--|----------|
| LAZERMasteR LZM-110M Glass Processing & Splicing System (Standard baseline LZM-110 system. Includes AC adapters & cords and FPS PC software) | S016410 |
| LAZERMasteR LZM-110P Glass Processing & Splicing System (Standard baseline LZM-110 system. Includes AC adapters & cords and FPS PC software) | S016412 |
| All-in-one Computer (includes keyboard and mouse, monitor stand for mounting all-in-one computer. FPS software pre-installed.) (recommended) | S015242 |

SPECIFICATIONS

| | |
|--|---|
| Fiber Heating and Splicing Method | CO ₂ Laser |
| CO ₂ Laser Power | 30 W standard (Lasers with other power levels may be selected to meet customer requirements.) |
| Laser Safety Features | Metal cover with interlock, class 1 enclosure Automatic actuation of safety shutter Automatic laser power cutoff Triple redundancy |
| Laser Beam Control | Proprietary feedback system assures laser beam power stability Laser beam size and shape may be customized to meet specific user requirements |
| Typical Splice Loss | 0.02 dB for SMF (ITU-T G.652) |
| Typical Splice Strength | 250+ kpsi for SMF (ITU-T G.652) using appropriate fiber preparation equipment |
| Camera Field of View | 2.3 mm |
| Fiber Observation Methods | <ul style="list-style-type: none"> PAS (Profile Alignment System) via transverse fiber observation. WSI (Warm Splice Image) and WTI (Warm Taper Image) |
| Applicable Fiber Diameter | 80 μm to 2000 μm for automatic alignment by PAS Larger diameter fibers may be aligned manually or by power meter feedback |
| V-Groove Clamping System | Infinitely variable from 80 μm up to 2300 μm Clamping bare fiber or fiber coating Patented "split V-groove" system |
| Fiber Handling | Fujikura FSM-100, FSM-45, & FSM-40 splicer fiber holders |
| Alignment Methods | 3 methods for PM alignment: PAS (Profile Alignment System, automatic alignment by camera observation) Manual; Other methods by PC control; Power meter feedback via GPIB; |
| Endless Theta Rotation | 360 deg endless rotation for 100P model, angle resolution 0.1 deg |
| X/Y Alignment Resolution | 0.1 μm |
| Maximum Z Travel Length | 10mm (both left and right Z units) as well as sweep |
| Z Travel Resolution | 0.125 μm theoretical |
| Maximum Taper Length | 8 mm |
| Maximum Taper Ratio | 10:1 standard (For uniform direction, one-pass tapering) Dual direction tapering offers greatly increased taper ratios, as does tapering with more than one tapering pass. |
| Maximum Taper Speed | 1 mm/sec standard |
| Splicing Control | Internal firmware or operation by PC |
| Fiber Tapering & Glass Shaping Control | Internal firmware or operation by PC |
| PC Control | FPS software will be provided complete command set for PC control |
| PC Option | All-in-one Computer is available as an option. Use of the FPS software on a PC provides finer control and additional features compared to the LZM-110 internal firmware. |
| Interface Ports | USB 2.0 (For PC communications, data and image download, etc.) GPIB (for power meter feedback) |
| Electrical Power | 100-240 VAC |
| Operating / Storage Conditions | 15-30 °C / 15-40 °C |
| Rotation Motors | Optional (Provides theta rotational motion for PM fiber alignment in the LZM-110P model) |
| PM Fiber Alignment Methods | <ul style="list-style-type: none"> PAS (For PANDA and other PM fibers) IPA (Interrelation Profile Alignment, applicable to almost all PM fibers. Three distinct IPA methods available.) Power meter feedback (Requires polarizer & analyzer, as well as GPIB interface) Manual Other methods by PC control |
| Flexibility for Customer Design Input | Customizable platform |

Specifications and descriptions are subject to change without prior notice.

Fujikura Ltd.

Phone: +81-3-5606-1164 <http://www.fujikura.co.jp>

Fujikura Asia Ltd.

Phone: +65-6-271-1312 <http://www.fujikura.co.sg>

Fujikura Europe Ltd.

Phone: +44-20+8240-2000 <http://www.fujikura.co.uk>

AFL (North America)

Phone: +1-864-433-0333 <http://www.AFLglobal.com>

Fujikura (China) Co., Ltd.

Phone: +86-21-6841-3636 <http://www.fujikura.com.cn>